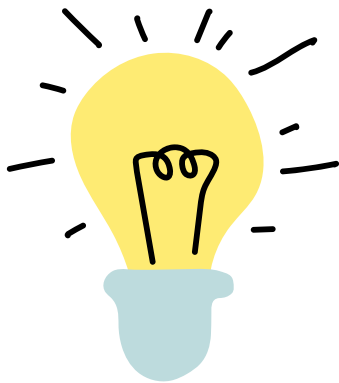


Hypothesis Workshop Series

February Social Annotation Learning Labs



Join us for an engaging series designed for advanced users, focusing on Hypothesis features and current issues in educational technology. **These 45-minute Zoom workshops take place on Thursdays at 11:30 PT/2:30pm ET.**

Social Annotation for Large Courses (Feb. 6)

[Register here](#)

Social Annotation in STEM Subjects (Feb. 13)

[Register here](#)

Social Annotation with Primary Sources in the Humanities (Feb. 20)

[Register here](#)

Research-based Strategies for Social Annotation (Feb. 27)

[Register here](#)

For more information, visit:

<https://web.hypothes.is/education/hypothesis-partner-workshops/>

Questions? Email [**success@hypothes.is**](mailto:success@hypothes.is)